

***LANGSUN
CARBIDE***



Professional & Reliable

Ningbo Langsun Tungsten Carbide Co.,Ltd.

LANGSUN CARBIDE

COMPANY PROFILE



Ningbo Langsun Tungsten Carbide Co., Ltd. is a professional tungsten carbide manufacturer in China. We have a very experienced team in sales, developing and researching new tungsten carbide products. We have more than 10 years rich experience in tungsten carbide field, and have many OEM products produced for our domestic and abroad customers.

Our main products include tungsten carbide wear parts, mechanical seal rings and sleeves, nozzles, carbide blade, carbide mining bits, drilling bits, drill tools, tungsten carbide inserts, tungsten rods and plates, carbide cutting tips, roll for high speed rolling for steel bar, tungsten balls and seats, tungsten jewelries, and non-standard customized tungsten carbide products.

With strict quality control system, our products are certificated with ISO9001:2008. Our products have been selling well in such areas as North America, Europe, Southeast Asia etc. with a good reputation. We want to establish a long-term relationship with our customers, satisfying our customers with the best quality and service is always our chasing aim in our business.





Content

Tungsten Carbide Material Grade Specification-----	1~3
Tungsten Carbide Rings-----	4
Tungsten Carbide Sleeves-----	5
Tungsten Carbide Nozzles-----	6~8
Tungsten Carbide Drawing Dies-----	9~10
Tungsten Carbide Rods-----	11~15
Tungsten Carbide Mining Bits-----	16~19
Tungsten Carbide Rotatory burrs-----	20~21
Tungsten Carbide Inserts-----	22
Tungsten Carbide Blades-----	23
Tungsten Carbide Plates-----	24
Tungsten Carbide Balls and Valve Seats-----	25
Tungsten Carbide Nonstandard Parts-----	26~27
Quality Control Management System-----	28



TUNGSTEN CARBIDE MATERIAL GRADE SPECIFICATION

Conventional grades

Grade	ISO Grade	Density g/cm ³	Hardness HRA>	T.R.S>N /mm ²	Performances or recommended applications
YG3	K05	15.20-15.40	91.5	1400	Medium grain, for finishing machining of cast iron and non-ferrous metals
YG3X	K05	15.20-15.40	92	1300	Fine grain, for finishing machining of cast iron and non-ferrous metals
YG4C		15.05-15.25	90	1620	Coarse grain, for percussion drill bits and mining inserts
YG6	K20	14.85-15.05	90.5	1860	Medium grain, for rough machining of non-ferrous metals
YG6A	K10	14.85-15.05	92	1600	Fine grain, for drawing dies and woodworking tools
YG6X	K10	14.85-15.05	91.7	1800	Fine grain, for cutting of non-ferrous metals
YG7	K20	14.65-14.85	90	1900	Medium grain with good wear-resistance and good impact- resistance
YG8	K30	14.60-14.85	89.7	2060	Medium grain, for drawing dies
YG8A	K30	14.6-14.85	90	2000	Medium grain, for the drawing dies and wood-working
YG8X	K30	14.60-14.85	90.5	2000	Fine grain, high hardness and oxidation resistance at high temperatures and good impact toughness
YG8C		14.55-14.75	88	2160	Coarse grain, for button drill bits and the mining inserts
YG10	K40	14.25-14.55	88	2160	Medium grain, for machining gray cast iron with a low hardness
YG11	K40	14.30-14.50	87.5	2260	Medium grain, for wear parts and mining tools
YG11C		14.20-14.40	87	2260	Coarse grain, for mining inserts
YG12	K40	14.10-14.40	87	2260	Medium grain, for rough machining of non-ferrous metals
YG15		13.95-14.15	86.5	2400	Medium grain, for mining tools, cold heading and punching dies
YG20		13.45-13.65	84	2480	Medium grain, for non-standard dies and moulds, cold heading and punching dies
YG20C		13.40-13.60	82.5	2480	Coarse grain, for die and moulds making screws of a diameter of ϕ 20- ϕ 50mm
YG22		13.15-13.55	83	2480	Medium grain, for non-standard dies and moulds, cold heading and punching dies



TUNGSTEN CARBIDE MATERIAL GRADE SPECIFICATION

High-performance grade

Grade	ISO Grade	Density g/cm ³	Hardness HRA>	T.R.S>N /mm ²	Performances or recommended applications
YD40		13.10-13.55	82.5	2480	High impact resistance, for cold heading and punching dies and hot heading and punching dies
YD45		13.25-13.65	83	2480	High impact resistance, a special grade for hot heading dies
YG011	K10	14.55-14.75	92.5	1840	Ultra-fine grain size, for machining glass fiber reinforced plastics, titanium alloys, hardened steel with a high hardness
YG012	K20	14.25-14.55	91	2160	Ultra-fine grain, for milling cutters and the hole-machining tools
YG013	K10	14.35-14.60	91.5	2060	Ultra-fine grain with good wear resistance and toughness, for wood-working tools
YG014	K05	14.65-14.95	93	1760	Ultra-fine grain, for finishing machining of non-ferrous metals and for wood-working tools

Special mining grade

YK5		14.80-15.10	89	2060	With high toughness and good wear resistance, it is suitable mainly for buttons and inserts used in small and medium size percussion drill bits for drilling medium hard rock formations
YK10		14.60-14.85	89.5	2260	With high toughness and good wear resistance, it is suitable mainly for buttons and inserts used in small and medium size percussion drill bits
YK20		14.30-14.60	86.5	2350	With high toughness and good wear resistance, it is suitable mainly for embedding rotary percussive drill bits for drilling medium hard and rather hard rock formations
YK25		14.35-14.70	87	2450	With high toughness and good wear resistance, it is suitable mainly for embedding rotary percussive drill bits for drilling medium hard and rather hard rock formations
YK40		13.90-14.20	86.5	2450	With high toughness and good wear resistance, it is suitable mainly for embedding rotary percussive drill bits for drilling medium hard and rather hard rock formations
YK45		13.80-14.20	86	2450	With high toughness and good wear resistance, it is suitable mainly for embedding rotary percussive drill bits for drilling medium hard and rather hard rock formations
YK50		13.80-14.20	85.5	2450	With ultra high toughness and good wear resistance, it is suitable mainly for embedding button drill bits, tri-cone drill bits for drilling medium-hard and rather hard rock formations



TUNGSTEN CARBIDE MATERIAL GRADE SPECIFICATION

Conventional grades

Grade	ISO Grade	Density g/cm ³	Hardness HRA>	T.R.S>N /mm ²	Performances or recommended applications
YN6	K20	14.8-15.0	90-91	1600	Medium grain,with high impact resistance,corrosion resistance and good wear resistance,suitable for wear parts and mechanical sealing parts.
YN8	K30	14.6-14.8	89-90	1760	Medium grain,with high impact resistance,corrosion resistance and good wear resistance,higher hardness,suitable for wear parts and mechanical sealing parts.
YN10		14.2-14.7	90-91	2000	Medium grain,with high impact resistance,corrosion resistance and good wear resistance,higher hardness,suitable for wear parts and mechanical sealing parts.

Conventional grades we mix for our clients in Tungsten Carbide Nickle binder

LSCN1	5.8-6.2	14.4-14.9	90.0-91.5	1760	Medium grain,with high impact resistance,corrosion resistance and good wear resistance,suitable for various kinds of wear parts.
LSCN2	14.0-15.5	13.5-14.2	86.5-88.0	2040	Medium grain,with high impact resistance,corrosion resistance and good wear resistance,suitable for various kinds of wear parts.
LSCN100	5.7-6.2	14.5-14.9	88.5-91.0	1800	Medium grain,with high impact resistance,corrosion resistance and good wear resistance,suitable for various kinds of wear parts.
LSCN200	7.7-8.2	14.4-14.8	87.5-90.0	2000	Medium grain,with high impact resistance,corrosion resistance and good wear resistance,suitable for various kinds of wear parts.

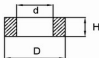
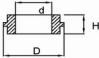
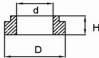
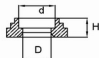
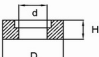
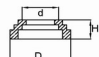
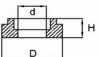
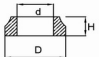
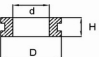
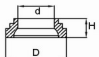
Tungsten Carbide Rings

Application: Mechanical sealing rings, Stationary rings, Orifice rings, carbide bearing, Carbide sleeves, Carbide seats, Carbide shafts, Bushings, Valve cores and Drawing dies. The material covers WC-Co alloy, WC-Ni alloy, WC-Ni/Co alloy etc.

Tungsten Carbide Rings Properties:

- Superior compressive strength
- Enhanced corrosion resistance
- Great wear resistance
- Exceeding hardness



TPYE	DRAWING	TPYE	DRAWING
Flat Ring		Other Groove Ring	
Outer Groove Ring			
Inner Groove Ring			
Mid Groove Ring			
Groove Ring			
D:10-600 d:5-500 H:3-50		D:10-600 d:5-500 H:3-50	



Tungsten Carbide Sleeves

We have many kinds of tungsten carbide bushing products, with good materials, excellent performance and good wear resistance. To make our products high machining accuracy, keeping operation precision, prolong the life time of rolling axletree, we strictly control our quality, and have a high reputation in our industry. We produce many OEM carbide sleeves for our clients all over the world.



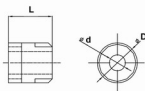
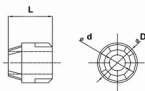
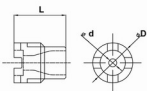
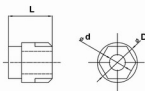
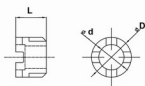
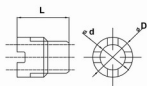
Application: Tungsten Carbide Sleeves are often used in water pump, oil pump and other pumps, especially used for high pressure or corrosion resistance pumps, flow restrictors, servo seats and down hole drills.

TYPE	DRAWING	SIZE		
		D	d	H
STRAIGHT-TYPE		1-420	1-380	1-400
T-TYPE				
MUSHROOM-TYPE				

Tungsten Carbide Nozzles

Application: Solid Tungsten Oil Nozzle, Tungsten Carbide PDC Spray Nozzle, Tungsten carbide venturi nozzle.

Sand-blasting Nozzle is for removing rust on the bottom of ship. Slurry nozzles or Mud nozzles are widely applied in oil industry, various cleaning spray of coating lines, cleaning machines, atomized spray and bath mixing equipments in the Automotive industry.



Specification	L	D	d
Φ16.5X20.5-1	20.5	16.5	6.35
Φ16.5X20.5-2	20.5	16.5	7.95
Φ16.5X20.5-3	20.5	16.5	9.53
Φ16.5X20.5-4	20.5	16.5	11.1
Φ25.8X35.2-1	35.2	25.8	5.55
Φ25.8X35.2-2	35.2	25.8	6.4
Φ25.8X35.2-3	35.2	25.8	7.1
Φ25.8X35.2-4	35.2	25.8	7.9
Φ25.8X35.2-5	35.2	25.8	8.7
*****	*****	*****	*****



Veturi Nozzle Series

The Venturi Nozzle is an attractive solution for measurements with high accuracy and low residual pressure loss requirements.

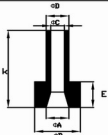
The profile of the Venturi Nozzle is axisymmetric. It consists of a convergent section, with a rounded profile, a cylindrical throat and a divergent section.

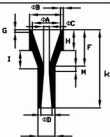
venturi nozzles have become successful in all types of chemical application, making themselves indispensable in modern agriculture, for effective and economic spraying and compliance with environmental standards.

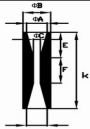
One of the main advantages of venturi nozzle technology is the combination of significant drift reduction with no impairment of spray performance.

Item	Dimension(mm)									Drawing
	ΦA	ΦB	ΦC	ΦD	ΦE	F	G	M	K	
	±0.25	±0.25	±0.25	±0.25	±0.25	±1	±1	±1	±0.5	
LSC01-1	24.5	30	5.0	9.0	18.0	50	96	21	130	
LSC01-2	24.5	30	8.0	12.5	20.0	50	96	21	140	
LSC01-3	24.5	30	10.0	13.5	21.0	50	96	21	170	
LSC01-4	24.5	30	13.5	19.5	27.0	50	96	21	226	
LSC01-5	30	36	6.5	12.5	19.5	54	70	20	130.4	
LSC01-6	30	36	8.0	12.5	19.5	54	70	20	141	
LSC01-7	30	36	11.0	15.0	21.5	55	69	21	200	

Item	Dimension(mm)							Drawing
	ΦA	ΦB	ΦC	ΦD	ΦE	F	K	
	±0.25	±0.25	±0.20	±0.20	±0.25	±2	±0.5	
LSC02-1	32.0	25.0	6.2	8.0	16.0	45.0	78.0	
LSC02-2	32.0	25.0	8.0	10.0	18.0	45.0	78.0	
LSC02-3	32.0	25.0	11.0	13.0	21.0	45.0	78.0	
LSC02-4	38.0	32.0	6.2	6.2	16.0	45.0	80.0	
LSC02-5	38.0	32.0	8.0	8.0	18.0	45.0	80.0	
LSC02-6	38.0	32.0	11.0	11.0	24.0	45.0	80.0	

Item	Dimension(mm)						Drawing
	ΦA	ΦB	ΦC	ΦD	E	K	
	±0.15	±0.15	±0.15	±0.15	±0.20	±0.20	
LSC03-1	18.0	27.0	6.0	12.0	36.0	72.0	
LSC03-2	18.0	27.0	8.0	14.0	36.0	72.0	
LSC03-3	18.0	22.0	6.0	13.0	36.0	86.0	
LSC03-4	18.0	22.0	8.0	15.0	36.0	86.0	

Item	Dimension(mm)											Drawing
	ΦA	ΦB	ΦC	ΦD	ΦE	F	G	H	I	M	K	
	±0.3	±0.2	±0.2	±0.3	±0.3						±0.5	
LSC04-1	20	26	6.0	9.0	15.0	24	3	15	21	9	110	
LSC04-2	20	26	8.0	11.0	17.0	24	3	15	21	9	110	
LSC04-3	25.5	33	10.0	13.0	19.0	44	3	10	29	21	110	
LSC04-4	25.5	33	11.0	14.0	20.0	44	3	10	29	21	110	

Item	Dimension(mm)							Drawing
	ΦA	ΦB	ΦC	ΦD	ΦE	F	K	
	±0.20	±0.20	±0.20	±0.20	±0.50	±0.50	±0.30	
LSC05-1	14.0	18.0	4.8	10.0	35.0	20.0	96.0	
LSC05-2	14.0	18.0	6.5	10.0	35.0	20.0	96.0	
LSC05-3	17.0	22.0	8.0	12.0	45.0	30.0	120.0	
LSC05-4	17.0	22.0	10.0	12.0	45.0	30.0	120.0	

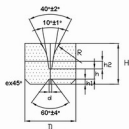


Tungsten Carbide Drawing Dies

We can supply a variety of tungsten carbide drawing dies in different specifications. It has a wide range of applications, like television, instrumentation, electronic devices, and radar, aerospace and other high-precision wire and commonly used tungsten wire, molybdenum wire, stainless steel wire, alloy wire and cable wire.



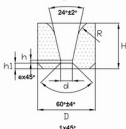
Type 01



Type	D	H	Range of d	h
01-	6	4	0.2-0.8	0.8
	8	6	1	1



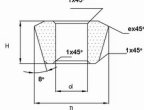
Type 22



Type	D	H	d	h
22-	20	13	2.0-2.7	1.5
	30	19	6.7-13.5	3.4
	35	18	14.5-17.5	4
	45	24	12.0-23.0	3
	50	25	24.0-30.0	5.6
	60	30	34.0-33.0	3.5
	65	32	34.0-38.0	6
	70	35	34.0-35.0	6.5
	75	35	40.0-42.0	6.5
	80	40	47.5	6.5
	80	35	34.5-47	6.5
	90	40	46-63	
	130	45	55-67	
	130	45	60-67	6.5
	130	50	60-77	
	140	50	70-88	



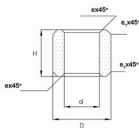
Type 30



Type	d	H	D	e
30-	4	10	11	1
	6	12	13, 15	1
	8	12	17	1
	10	14	18.5, 21.5	1
	12	16	23.5	1
	14	18	25.5, 27.5	1.2
	17	27	28.07	2
	19	27	38.2, 39.4	2
	21	27	40-43	3
	23	32	44-46	3.4
	25	32	47-50	4
	27	32	50-57	4
	28	35	50-64	4



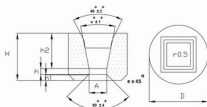
Type 31



Type	d	H	Range of D
31-	7	25	14.0-16.0
	8	25	17.0-18.0
	10	30	19.0-22.0
	12	30	23.0-27.0
	16	35	28.0-32.0
	20	35	33.0-42.0
	22	40	43.0-44.0
	26.4	45	45.0-47.0



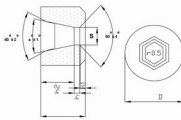
Type 40



Type	D	H	Range of A	h	α°
40-	16	12	1.6-2.4	1	14°
	22	18	2.8-4.0	1.5	
	30	21	4.6-4.7	2	
	25	25	7.7-9.7	3	
	45	25	10.7-14.7	3.5	
	50	28	15.7-18.7	4	16°
	60	30	19.7-23.7	5	
	65	32	24.7-27.5	6	
	70	35	28.5-31.5	8	
	80	35	32.5-37.5	8	



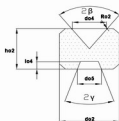
Type 60



Type	D	H	Range of S	h	α°
60-	30	21	2.5-7.7	1.5-2	14°
	35	21	8.6-10.6	3	
	40	25	11.5-12.5	3.5	
	45	25	13.5-18.5	4	
	55	28	19.5-23.5	5	
	65	30	24.5-28.5	6	16°
	75	35	29.5-37.5	7	
	90	35	38.0-49.0	7	
	100	40	52.0-57.5	8	
	120	42	59.5-74.5	8	



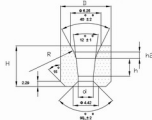
Type AB(1)



Type	φD2	h02	φD4	φD5	2β±2°	2γ±4°
A08-00	8	4	4.2	2.2	90°	90°
A10-00	10	8	7.6	4.2		
B08-00	8	4	4.2	2.2		
B10-00	10	8	7.6	4.2		



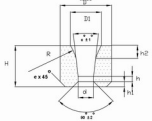
Type R2



Type	D	H	d	h	α°
R2-d	8.5	8.64	0.51-2.54	1.93-4.39	12



Type R4

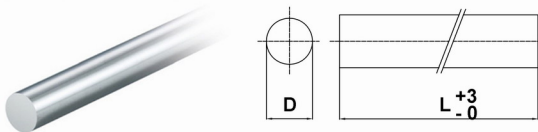


Type	D	H	d	h	α°
R4-d-12	12.7	11.4	1.0-4.6	0.5-1.6	12
R4-d-16	12.7	11.4	0.3-4.6	0.5-1.8	16



Tungsten Carbide Rods

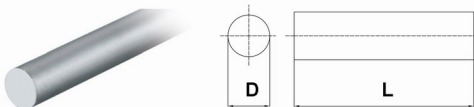
Sintered Carbide Round Rods



Sintered Carbide Round Rods

Type	Diameter(mm)	Tol. H6(mm)	Type	Diameter(mm)	Tol. H6(mm)
RR0100-330-G	1.0	+0.5/+0.3	RR1350-330-G	13.5	+0.6/+0.4
RR0150-330-G	1.5	+0.5/+0.3	RR1400-330-G	14.0	+0.6/+0.4
RR0200-330-G	2.0	+0.5/+0.3	RR1450-330-G	14.5	+0.6/+0.4
RR0250-330-G	2.5	+0.5/+0.3	RR1500-330-G	15.0	+0.6/+0.4
RR0300-330-G	3.0	+0.5/+0.3	RR1550-330-G	15.5	+0.6/+0.4
RR0350-330-G	3.5	+0.5/+0.3	RR1600-330-G	16.0	+0.6/+0.4
RR0400-330-G	4.0	+0.5/+0.3	RR1650-330-G	16.5	+0.6/+0.4
RR0450-330-G	4.5	+0.5/+0.3	RR1700-330-G	17.0	+0.6/+0.4
RR0500-330-G	5.0	+0.5/+0.3	RR1750-330-G	17.5	+0.6/+0.4
RR0550-330-G	5.5	+0.5/+0.3	RR1800-330-G	18.0	+0.6/+0.4
RR0600-330-G	6.0	+0.5/+0.3	RR1850-330-G	18.5	+0.6/+0.4
RR0650-330-G	6.5	+0.5/+0.3	RR1900-330-G	19.0	+0.6/+0.4
RR0700-330-G	7.0	+0.5/+0.3	RR1950-330-G	19.5	+0.6/+0.4
RR0750-330-G	7.5	+0.5/+0.3	RR2000-330-G	20.0	+0.6/+0.4
RR0800-330-G	8.0	+0.5/+0.3	RR2050-330-G	20.5	+0.6/+0.4
RR0850-330-G	8.5	+0.5/+0.3	RR2100-330-G	21.0	+0.6/+0.4
RR0900-330-G	9.0	+0.5/+0.3	RR2150-330-G	21.5	+0.6/+0.4
RR0950-330-G	9.5	+0.5/+0.3	RR2200-330-G	22.0	+0.6/+0.4
RR1000-330-G	10.0	+0.5/+0.3	RR2250-330-G	22.5	+0.6/+0.4
RR1050-330-G	10.5	+0.5/+0.3	RR2300-330-G	23.0	+0.6/+0.4
RR1100-330-G	11.0	+0.5/+0.3	RR2350-330-G	23.5	+0.6/+0.4
RR1150-330-G	11.5	+0.5/+0.3	RR2400-330-G	24.0	+0.6/+0.4
RR1200-330-G	12.0	+0.6/+0.4	RR2450-330-G	24.5	+0.6/+0.4
RR1250-330-G	12.5	+0.6/+0.4	RR2500-330-G	25.0	+0.6/+0.4
RR1300-330-G	13.0	+0.6/+0.4	RR2550-330-G	25.5	+0.6/+0.4

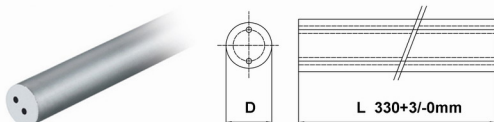
Sintered Carbide Round Rods for PCB Cutting Tools



Sintered Carbide Round Rods for PCB Cutting Tools				
Type	Diameter(mm)OD	Tol.(mm)	Length (mm)	Tol. (mm)
PCB0300385	3.00	+0.1/-0	38.5	+0.4/-0
PCB0325385	2.25	+0.1/-0	38.5	+0.4/-0
PCB0350385	3.50	+0.1/-0	38.5	+0.4/-0
PCB0375385	3.75	+0.1/-0	38.5	+0.4/-0
PCB0400385	4.00	+0.1/-0	38.5	+0.4/-0
PCB0425385	4.25	+0.1/-0	38.5	+0.4/-0
PCB0450385	4.50	+0.1/-0	38.5	+0.4/-0
PCB0475385	4.75	+0.1/-0	38.5	+0.4/-0
PCB0500385	5.00	+0.2/-0	38.5	+0.4/-0
PCB0525385	5.25	+0.2/-0	38.5	+0.4/-0
PCB0550385	5.50	+0.2/-0	38.5	+0.4/-0
PCB0575385	5.75	+0.2/-0	38.5	+0.4/-0
PCB0600385	6.00	+0.2/-0	38.5	+0.4/-0
PCB0625385	6.25	+0.2/-0	38.5	+0.4/-0
PCB0650385	6.50	+0.2/-0	38.5	+0.4/-0
PCB0675385	6.75	+0.2/-0	38.5	+0.4/-0
PCB0700385	7.00	+0.2/-0	38.5	+0.4/-0
PCB0725385	7.25	+0.1/-0	38.5	+0.25/-0
PCB0300128	3.00	+0.1/-0	12.8	+0.25/-0
PCB0325128	3.25	+0.1/-0	12.8	+0.25/-0
PCB0350128	3.50	+0.1/-0	12.8	+0.25/-0
PCB0375128	3.75	+0.1/-0	12.8	+0.25/-0
PCB0400128	4.00	+0.1/-0	12.8	+0.25/-0
PCB0425128	4.25	+0.1/-0	12.8	+0.25/-0
PCB0450128	4.50	+0.1/-0	12.8	+0.25/-0
PCB0475128	4.75	+0.1/-0	12.8	+0.25/-0
PCB0500128	5.00	+0.2/-0	12.8	+0.25/-0
PCB0525128	5.25	+0.2/-0	12.8	+0.25/-0
PCB0550128	5.50	+0.2/-0	12.8	+0.25/-0
PCB0575128	5.75	+0.2/-0	12.8	+0.25/-0
PCB0600128	6.00	+0.2/-0	12.8	+0.25/-0
PCB0625128	6.25	+0.2/-0	12.8	+0.25/-0
PCB0650128	6.50	+0.2/-0	12.8	+0.25/-0
PCB0675128	6.75	+0.2/-0	12.8	+0.25/-0
PCB0700128	7.00	+0.2/-0	12.8	+0.25/-0
PCB0725128	7.25	+0.2/-0	12.8	+0.25/-0

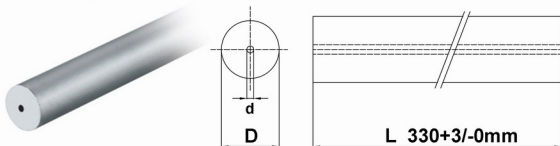


Sintered Carbide Round Rods with 2 Parallel Holes



Sintered Carbide Round Rods with 1 Parallel Holes						
Type	Diameter(mm)OD	Tol.h6(mm)	Diameter(mm)ID	Tol. (mm)	TK(mm)	Tol.(mm)
RR0300-330-1/0.8S	3.0	+0.5/+0.3	0.80	-0.15	1.8	-0.15
RR0400-330-1/0.8S	4.0	+0.5/+0.3	0.80	-0.15	1.8	-0.15
RR0500-330-1/0.8S	5.0	+0.5/+0.3	0.80	-0.15	2	-0.15
RR0600-330-1/1.0S	6.0	+0.5/+0.3	1.00	-0.2	3	-0.2
RR0700-330-1/1.0S	7.0	+0.5/+0.3	1.00	-0.2	3.5	-0.2
RR0800-330-1/1.0S	8.0	+0.5/+0.3	1.00	-0.3	4	-0.3
RR0900-330-1/1.4S	9.0	+0.5/+0.3	1.40	-0.3	4	-0.3
RR1000-330-1/1.4S	10.0	+0.5/+0.3	1.40	-0.3	5	-0.3
RR1100-330-1/1.4S	11.0	+0.6/+0.4	1.40	-0.3	5	-0.3
RR1200-330-1/1.75S	12.0	+0.6/+0.4	1.75	-0.3	6	-0.3
RR1300-330-1/1.75S	13.0	+0.6/+0.4	1.75	-0.3	6	-0.3
RR1400-330-1/1.75S	14.0	+0.6/+0.4	1.75	-0.3	7	-0.3
RR1500-330-1/2.0S	15.0	+0.6/+0.4	2.00	-0.3	7	-0.3
RR1600-330-1/2.0S	16.0	+0.6/+0.4	2.00	-0.3	8	-0.3
RR1700-330-1/2.0S	17.0	+0.6/+0.4	2.00	-0.3	8	-0.3
RR1800-330-1/2.0S	18.0	+0.6/+0.4	2.00	-0.3	9	-0.3
RR1900-330-1/2.0S	19.0	+0.6/+0.4	2.00	-0.3	9	-0.3
RR2000-330-1/2.5S	20.0	+0.6/+0.4	2.00	-0.4	10	-0.4
RR2100-330-1/2.5S	21.0	+0.6/+0.4	2.00	-0.4	10	-0.4
RR2200-330-1/2.5S	22.0	+0.6/+0.4	2.00	-0.4	11	-0.4
RR2300-330-1/2.5S	23.0	+0.6/+0.4	2.00	-0.4	11	-0.4
RR2400-330-1/3.0S	24.0	+0.6/+0.4	2.00	-0.4	12	-0.4
RR2500-330-1/3.0S	25.0	+0.6/+0.4	2.00	-0.4	12	-0.4

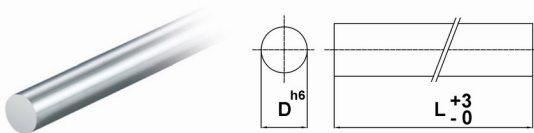
Sintered Carbide Round Rods with 1 Central Hole



Sintered Carbide Round Rods with 1 Central Hole				
Type	Diameter(mm)OD	Tol.h6(mm)	Diameter(mm)ID	Tol. (mm)
RR0200-330-1/0.5S	2.0	+0.5/+0.3	0.5	±0.08
RR0300-330-1/0.5S	3.0	+0.5/+0.3	0.5	±0.08
RR0400-330-1/0.8S	4.0	+0.5/+0.3	0.8	±0.08
RR0500-330-1/0.8S	5.0	+0.5/+0.3	0.8	±0.08
RR0600-330-1/1.0S	6.0	+0.5/+0.3	1.0	±0.10
RR0700-330-1/1.4S	7.0	+0.5/+0.3	1.0	±0.15
RR0800-330-1/1.4S	8.0	+0.5/+0.3	1.4	±0.15
RR0900-330-1/1.4S	9.0	+0.5/+0.3	1.4	±0.15
RR1000-330-1/1.4S	10.0	+0.5/+0.3	1.4	±0.15
RR1100-330-1/1.4S	11.0	+0.6/+0.3	1.4	±0.15
RR1200-330-1/1.5S	12.0	+0.6/+0.3	1.5	±0.15
RR1300-330-1/1.75S	13.0	+0.6/+0.3	1.75	±0.15
RR1400-330-1/1.75S	14.0	+0.6/+0.3	1.75	±0.15
RR1500-330-1/2.0S	15.0	+0.6/+0.3	2.0	±0.20
RR1600-330-1/2.0S	16.0	+0.6/+0.3	2.0	±0.20
RR1700-330-1/2.0S	17.0	+0.6/+0.3	2.0	±0.20
RR1800-330-1/2.5S	18.0	+0.6/+0.3	2.0	±0.25
RR1900-330-1/2.5S	19.0	+0.6/+0.3	2.0	±0.25
RR2000-330-1/2.5S	20.0	+0.6/+0.3	2.5	±0.25
RR2100-330-1/2.5S	21.0	+0.6/+0.3	2.5	±0.25
RR2200-330-1/2.5S	22.0	+0.6/+0.3	2.5	±0.25
RR2300-330-1/3.0S	23.0	+0.6/+0.3	2.5	±0.25
RR2400-330-1/3.0S	24.0	+0.6/+0.3	3.0	±0.25
RR2500-330-1/3.0S	25.0	+0.6/+0.3	3.0	±0.25



H6 Ground Carbide Round Rods



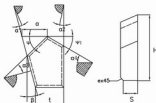
H6 Ground Carbide Round Rods

Type	Diameter(mm)	Tol. H6(mm)	Type	Diameter(mm)	Tol. H6(mm)
RR0100-330-G	1.0	+0/-0.006	RR1350-330-G	13.5	+0/-0.011
RR0150-330-G	1.5	+0/-0.006	RR1400-330-G	14.0	+0/-0.011
RR0200-330-G	2.0	+0/-0.006	RR1450-330-G	14.5	+0/-0.011
RR0250-330-G	2.5	+0/-0.006	RR1500-330-G	15.0	+0/-0.011
RR0300-330-G	3.0	+0/-0.006	RR1550-330-G	15.5	+0/-0.011
RR0350-330-G	3.5	+0/-0.006	RR1600-330-G	16.0	+0/-0.011
RR0400-330-G	4.0	+0/-0.008	RR1650-330-G	16.5	+0/-0.011
RR0450-330-G	4.5	+0/-0.008	RR1700-330-G	17.0	+0/-0.011
RR0500-330-G	5.0	+0/-0.008	RR1750-330-G	17.5	+0/-0.011
RR0550-330-G	5.5	+0/-0.008	RR1800-330-G	18.0	+0/-0.011
RR0600-330-G	6.0	+0/-0.008	RR1850-330-G	18.5	+0/-0.013
RR0650-330-G	6.5	+0/-0.008	RR1900-330-G	19.0	+0/-0.013
RR0700-330-G	7.0	+0/-0.009	RR1950-330-G	19.5	+0/-0.013
RR0750-330-G	7.5	+0/-0.009	RR2000-330-G	20.0	+0/-0.013
RR0800-330-G	8.0	+0/-0.009	RR2050-330-G	20.5	+0/-0.013
RR0850-330-G	8.5	+0/-0.009	RR2100-330-G	21.0	+0/-0.013
RR0900-330-G	9.0	+0/-0.009	RR2150-330-G	21.5	+0/-0.013
RR0950-330-G	9.5	+0/-0.009	RR2200-330-G	22.0	+0/-0.013
RR1000-330-G	10.0	+0/-0.009	RR2250-330-G	22.5	+0/-0.013
RR1050-330-G	10.5	+0/-0.011	RR2300-330-G	23.0	+0/-0.013
RR1100-330-G	11.0	+0/-0.011	RR2350-330-G	23.5	+0/-0.013
RR1150-330-G	11.5	+0/-0.011	RR2400-330-G	24.0	+0/-0.013
RR1200-330-G	12.0	+0/-0.011	RR2450-330-G	24.5	+0/-0.013
RR1250-330-G	12.5	+0/-0.011	RR2500-330-G	25.0	+0/-0.013
RR1300-330-G	13.0	+0/-0.011	RR2550-330-G	25.5	+0/-0.013

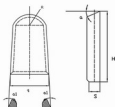
Tungsten Carbide Mining Bits

Coal Mining Bits

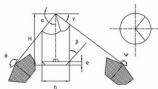
This kind of carbide bits are used in the Coal Cutter Drilling Tools, Mine machinery tools. Carbide Mining Button Bits are widely application for Rock tools, mining tools for use in quarrying, Mining, Tunnelling, Construction and Civil. Our company produce any standard sizes and other styles available on customers requests with higher quality guaranteed by HIP sinter.



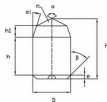
Type	Dimension(mm)											
	L	H	S	a	b	c	d	e	f	g	h	i
LSC1011	11	13.5	3	4.5	10°40'	30°	15°					1
LSC1012	12	14	3.5	6	30°	30°	15°					1
LSC1013	13.5	13.5	7.5	11°40'	28°30'	3°	15°					1
LSC1014	15		5	30°	30°							
LSC1015	15	19	3	30°	30°	10°						
LSC1016	15	19	3	30°	30°					20°	20°	1
LSC1017	15	19	3	30°	30°							
LSC1018	15	19	3	30°	30°							
LSC1019	15	19	3	30°	30°							



Type	Dimension(mm)						
	L	H	S	R	a	a1	e
LSC1215	15.5	22	7	5	15°	4°	1.5
LSC1222	22	22.5	7.5	9.5	11°	/	
LSC1230	30	35	12	8	8°	8°	1



Type	Dimension(mm)						
	D	W	a	B	V	W	a
LSC23-92001	11	21	56*	30*	48*		
LSC2312	12	22					
LSC2312A		25	58*		47*		
LSC2312B	12.5					120*	130*
LSC23-92002		20	56*	45*	48*		
LSC2314	14	22					
LSC2314A		25					

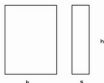


Type	Dimension(mm)							
	D	H	h	h1	r	a	a1	e
LSC20-97001	14.8	20.5	12.5	4	2	90°	35°	1.5
LSC2018	18	30	20	6	1.5	80°	30°	1
LSC20-96002	18	35	28	4	2.5	110°	45°	3.5

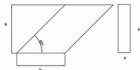


Geological Exploration Drill Tools

We produce cemented carbide products for geological prospecting tools with any standard sizes and other types according to clients requests. With our steady and higher technique and experienced engineers working, also our advanced sinter machine like HIP furnace, geological exploration tools have accepted by more and more abroad customers.



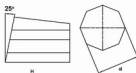
Type	Dimension (mm)		
	b	h	s
LSC1003	3	15	1.5
LSC1006	6	20	4
LSC1008	8	20	6



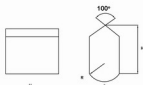
Type	Dimension(mm)	
	b	s
LSC1108	8.5	3
LSC1112	12	4



Type	Dimension(mm)		
	b	h	s
LSC2004	4	15	3.6
LSC2005	5	20	4
LSC2006	6	20	6
LSC2008	8	20	6
LSC2010	10	20	8



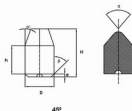
Type	Dimension(mm)	
	d	h
LSC3005	5	10
LSC3007	7	10
LSC3007A	7	15
LSC3007B	7	20
LSC3010	10	15
LSC3010A	10	20



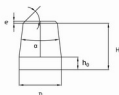
Type	Dimension(mm)			
	b	h	s	R
LSC4010	10	16	8	4
LSC4012	12	12	8	4
LSC4014	14	14	8	4

Drill Button Bits

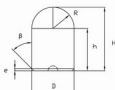
Carbide buttons as its unique performance are widely application for oil filed drilling. According to the different oil-field drilling machinery such as Roller Cone Bits, DTH Bits, Geotechnical Drilling Tools, Drifter Bits, button been divided into different standard styles : P type flat-top bits, Z type coinspherical bits, X type wedge bits. Quality are guaranteed by our steady and higher technic.



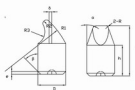
Type	Dimension(mm)									
	D	H	R1	R2	R3	R4	R5	R6	R7	R8
LSC1215	22	15	2	2.5	6.5	60°	18°	18°	3	1.2
LSC1217	17	17			11	70°				
LSC1318	13	18.5	1.8		10.5	75°	20°		4	1.5
LSC-96001	18	18	2		12		18		3	1.2
LSC1418	14		2.5	3		80°	35	15°	5	1.5
LSC1419	19	2				75°				
LSC1520	15	20	2.5		12.5		18°	18°	3.5	2.2
LSC1421	14	21			13.5	70°	20°		4	1.8
LSC1407	14	27	3		18		22°		5	2
LSC1824	18	24	3.5		15		20°		4.5	1.8
LSC2030	22	30			17	60°	18°			2.2



Type	Dimension				
	D	H	R ₀	e	α
LSC-98001	19	23	6	0.5	30°
LSC-98002					



Type	Dimension					
	D	H	R	h	β	e
LSC-80001	4.5	10.5	2.3	8.7	/	/
LSC-74001	6	8	3.1	5.5	45°	0.7
LSC-94001	8		4.1			0.3
LSC1313	13	13.5	6.7	8		
LSC1315	13.5	15.5	6.5	10	18°	1.5
LSC1415	14	15	7.4			
LSC1727	17.6	27	9	19.9	45°	1
LSC1825	18	25		16	30°	1.4

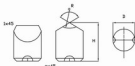


Type	Dimension									
	D	H	R	R ₁	R ₂	R ₃	h	α	β	δ
LSC1313-1	13	17	1.5	15	2.6	19	10.5	20°		0.9
LSC-45001	13	18.3	2.5	25	2.4	6	11.4	20°		1
LSC1421-1	14	21.5	1.5	20	2.4	20	11.5	20°		1.8
LSC-47001	15	20	3	30	2.2	19	11.3	30°/20°	18°	1.1
LSC1423-1	14	23	1.2	25	2.4	20	12	20°		1.3
LSC1420B-1	14	23		2.5	20		15°			2.5
LSC-98004	19	27		26	2.5		20	14	18°	2.2
LSC1431-1	14	31	3	26			19	16.3	18°	2.2
LSC-98005	20	32	2.5	27			25	17	15°	2.2

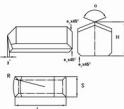


Rock Drilling Inserts

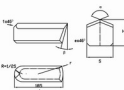
Carbide drilling insert is application for quarrying, tunnelling, water well and construction. Our drilling inserts with NEW STYLE that added RIBS to both side (front and back) and bottom of inserts, which make assembly easier, positioning accuracy, weld full symmetry and high product quality, also processed by Heat and Refrigerating Treatment, are better suited to the modern industrial production.



Type	Dimension				
	D	H	a	R	e
LSC3008	8	14	110°	/	1
LSC30-96501	9.2	16.7	80°	0.7	1.6
LSC3010	10	16	110°	/	1
LSC3012	12			/	
LSC3014	14	18		/	
LSC3016	16	20		/	
LSC3016A		22		/	
LSC3018	18	20		/	



Type	Dimension								
	L	H	S	R	a	Y	e1	e2	e3
LSC23-30001	11	6.5	7.8	19.1	80°	0.8	0.4	0.8	0.8
LSC23-30001	12								
LSC23-30002	13.5								
LSC23-30003	15.1								
LSC23-30004	16.7	14.3	7.7	70°	70°	/	/	/	/
LSC23-30005	18.3								
LSC23-30006	28.5	22	13	31	110°	/	/	2	0.5
LSC23-30007	29	25.4		38		/	/		1
LSC23-30008	34.7	22		45		/	/		1.5
LSC23-30009	35	25.4		14		/	/		0.5
LSC23-70001	42	20	12	50	70°	0.2	1.5		1.5



Type	Dimension							
	L	H	S	S1	R	a	e1	e
LSC318	18	18	10	4	21	110°	1	1
LSC345	45	20	14	8	55	110°	2	1.5

Tungsten Carbide Rotatory burrs

Carbide rotary burrs are also applied in machining iron, stainless steel, steel casting, alloy steel, carbon steel, copper aluminum etc. Functions of Carbide burrs and rotary files:

- 1).Machining a variety of metals when their hardness is under HRC65.
- 2).Grinding the hole to an accurate shape.
- 3).Increasing productivity of several ten times than using hand tools and three to five times than using small emery wheels
- 4).Instead of small emery wheels, without powder pollution.
- 5).Finish machining various kinds of die cavities.
- 6).Removing the burrs of the castings, forgings and the welding spatter on the weld assemblies.
- 7) Chamfering or burring the pipes.Polishing the impeller channel.



LSCG3



LSCG6x3



LSCH3



LSCH6x3



LSCL3



LSCL6x3



LSCM3



LSCN3



LSCF6x3



LSCD Beilow 6



LSCD3



LSCD6x3



LSCC3



LSCC6x3



LSCD above 6



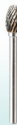
LSCE3



LSCA3



LSCA6x3



LSCE6x3



LSCF3



LSCF6x3

Tungsten Carbide Inserts

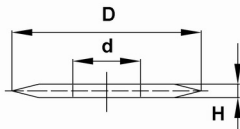
We are a professional carbide supplier which produces various grades of carbide inserts. With high precision and reliability, Tungsten carbide inserts are widely used in different industries.

Application: boring tool, grooving tools and periphery turning tools. The inserts are sorted as clamped inserts, wood-cutting tools, milling & turning inserts, etc. Many inserts for mining tools are made of tungsten carbide. Mining and tunneling cutting tools are fitted with Cemented Carbide tips so it is called "Button Bits". Only man-made diamond may replace the Cemented Carbide buttons when conditions are ideal, but as rock drilling is a tough task, Cemented Carbide button bits remain the most used type throughout the world.





Tungsten Carbide Blades



Specification	OD(mm)	ID(mm)	H(mm)
25X6XH	25.0	6.0	0.6-3.0
26X7XH	26.0	7.0	0.6-3.0
42X22XH	42.0	22.0	0.8-3.5
50X13XH	50.0	13.0	0.8-3.5
52X24.3XH	52.0	24.3	0.8-3.5
58X24.3XH	58.0	24.3	0.8-3.5
62X25.4XH	62.0	25.4	0.8-3.5
63X16XH	63.0	16.0	0.8-3.5
64X16XH	64.0	16.0	0.8-3.5
75X35XH	75.0	35.0	1.0-4.0
76X20.5XH	76.0	20.5	1.0-4.0
77X24.5XH	77.0	24.5	1.0-4.0
82X20.5XH	82.0	20.5	1.2-5.0
82X24XH	82.0	24.0	1.2-5.0
100X25XH	100.0	25.0	1.2-5.0
113X25XH	113.0	25.0	1.2-5.0
128X23.8XH	128.0	23.8	1.2-5.0
200X70XH	200.0	70.0	3.0-5.0
250X70XH	250.0	70.0	3.0-5.0
260X112XH	260.0	112.0	1.4-5.0
260X158XH	260.0	158.0	1.4-5.0
260X160XH	260.0	160.0	1.4-5.0
270X168XH	270.0	168.0	1.4-5.0
270X170XH	270.0	170.0	1.4-5.0

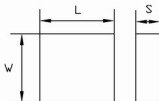
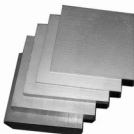
Tungsten Carbide Plates

Application: tungsten carbide plates can be applied in many different series of products like milling inserts, roller rings, pellets, bushes, rods, nib, plates, strips, trundling scissors, rollers for cold rolling, seal rings, percussive drilling tip balls, woodworking cutters, disc cutters, tile and glass cutters, boron carbide powder, drawing dies, heading & punching dies, cold heading & stamping dies, etc.

Our tungsten plates are with excellent abrasive resistance, good heat and corrosion resistance which runs a long service life.

Features of carbide draw plates with round holes as below:

a).24 holes: 0.26 - 1.00 b).39 holes: 0.26 - 2.80 c).24 holes: 2.30 - 6.00 large shape



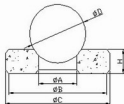
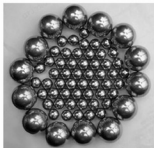
L	W	S
200	200	10-45
150	150	10-45
150	130	10-45
150	100	10-45
150	80	10-45
120	120	10-45
100	100	10-50
100	50	10-50
100	45	10-50
80	55	10-50
80	40	10-40
70	35	5-40
45	25	5-20
35	19	5-20
20	20	5-20
18	13	5-20
...



Tungsten Carbide Ball And Valve Seats

Precision machined tungsten carbide balls and valve seats

- * High strength, high wears resistance, high precision, high temperature resistant, corrosion resistant.
 - * They are mainly used for the sealing of valves of oil pumps in petroleum industry's sand containing wells, viscous oil wells, sea oil wells and high pressure sulfur resistant oil wells etc.
 - * They are used with compatible cemented carbide valve seats.
 - * The surface finish, tolerance class and tolerances of dimensions have respectively reached the standards of the machine industry: G5, G10, G16, G25, G40, G50 and G100 of GB308-2002.
 - * Precision machined cemented carbide balls of other grades and specifications are also available based on customers' demands.
 - * Compatible high precision valve seats can also be made available.
- Recommended Grade: YG3、YG6、YG6x、YG8、YG8x、YN6、YN9



Tolerance for reference:

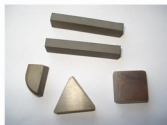
Grade	Size Range	Deviation from Spherical Form	Lot Diameter Variation	Allowable Ball Gage Variation	Nominal Ball Diameter Tolerance	Marking Increments	Maximum Surface Roughness in Micro-Inches"Ra"
3	0.006-1/2	0.000003	+/-0.00000	+/-0.00003	-	0.000010	0.5
5	0.006-1/2	0.000005	+/-0.00000	+/-0.00005	-	0.000010	0.8
10	0.006-7/8	0.000010	+/-0.000010	+/-0.00005	-	0.000010	1.0
25	0.006-1	0.000025	+/-0.000025	+/-0.00010	-	0.000010	2.0
50	0.006-1	0.000050	+/-0.000050	-	+/-0.0002	0.000050	3.0
100	0.006-1	0.000100	+/-0.000100	-	+/-0.0005	-	5.0
200	0.006-1	0.000200	+/-0.000200	-	+/-0.0010	-	8.0
1000	0.006-1	0.001000	+/-0.001000	-	+/-0.0050	-	-

Tungsten Carbide Nonstandard Parts

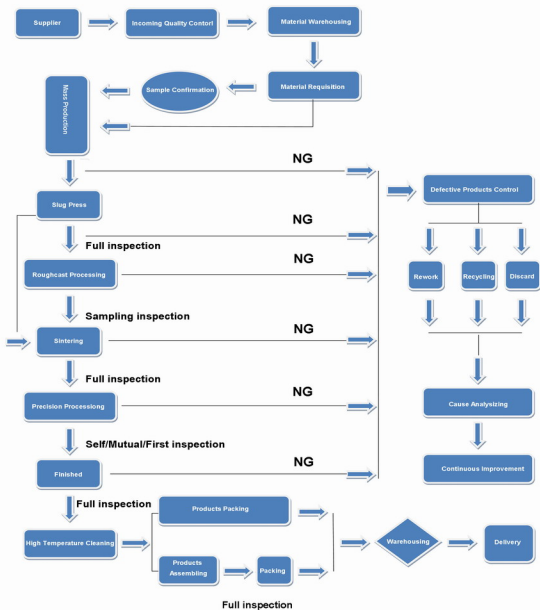
We often process many difficult tungsten carbide nonstandard parts with high precision. According to our customers' requests, machining different and irregular carbide parts has been a big characteristic of our manufacturer. We have many OEM clients from all over the world.

Welcome your inquiry about the details as well as individual customer specification. And we sincerely invite you to experience our good quality, excellent service, competitive price and various competencies.





Quality Control Management System





www.ls-carbide.com
www.langsuncarbide.com

E-mail:sales@ls-carbide.com

Tel: 86-574-88214708 / 86-574-88316019

Fax: 86-574-88214708 / 86-574-88311019

Office Add: No.1299 Yinxian Avenue,
Yinzhou Chamber of Commerce, Ningbo, China